



## **NHS Monthly Insight Report**

**December 2021**

360 Assurance is a member of The Internal Audit Network (TIAN) which comprises the 10 NHS internal audit consortiums and in house teams operating in England. These organisations collaborate across a number of areas to leverage their collective knowledge and expertise and drive efficiency and effectiveness. The monthly insight report highlights key publications and is intended as a useful update and reference tool. This report is produced by TIAN and shared by 360 Assurance.

# Monthly Insight Report

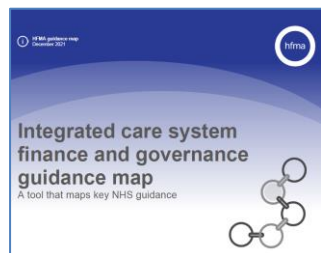
## December 2021

### Introduction

The Internal Audit Network (TIAN) comprises the 10 NHS internal audit consortiums and in house teams operating in England. These organisations collaborate across a number of areas to leverage their collective knowledge and expertise and drive efficiency and effectiveness. The monthly Insight Report is produced by CW Audit on behalf of TIAN and is shared across TIAN members and their clients.

### Developments in the NHS

HFMA Integrated care system finance and governance guidance map



The HFMA has produced an integrated care system (ICS) finance and governance guidance map. The map brings together the key guidance and useful resources to help navigate the information that has been published to support the change to statutory ICSs. The map covers:

- strategic framework
- financial framework
- governance
- provider collaboratives and place
- workforce
- working with partners outside the NHS

It signposts the key guidance available, and when they were last updated. It can be found here:

<https://www.hfma.org.uk/publications/details/integrated-care-system-finance-and-governance-guidance-map> and will be updated regularly.

**For information**

Summary of People at the heart of care: adult social care reform (HFMA Briefing)

On 1 December 2021, the Department of Health and Social Care (DHSC) published a white paper setting out a 10-year vision for adult social care. The white paper describes how previously announced funding will be used to reform adult social care, including developing the workforce, supporting digital transformation, and improving integration with housing.

This summary briefing (<https://www.hfma.org.uk/publications/details/summary-of-people-at-the-heart-of-care-adult-social-care-reform>) sets out the key points of the 10-year vision and the supporting policies. The white paper, People at the heart of care: adult social care reform, should be referred to for the full details that are available at this stage.

**For information**

## Developments in the NHS

Demising CCGs: maintaining corporate memory

Integrated care boards: finance policies and procedures

Provisions and accruals: the impact of the Health and Care Bill on CCGs

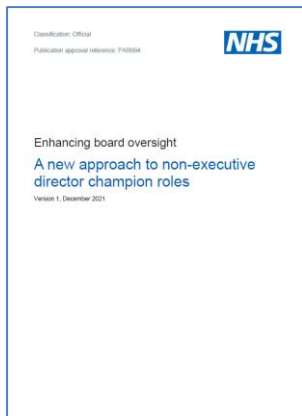
### Drafts for comment from HFMA

To support members as CCGs closedown and integrated care boards (ICBs) are established, the HFMA is publishing three documents to assist a smooth transition between organisations. These documents are in draft form so that members can review and suggest useful changes or additions – please contact [policy@hfma.org.uk](mailto:policy@hfma.org.uk) by 14 January 2022 with any feedback.

1. Demising CCGs: The aim of this briefing is to ensure that legacy issues from demising CCGs, as well as organisational memory, are captured and managed during and after the transition to ICBs.
2. ICB policies and procedures: A firm financial control environment is essential for any organisation, providing clarity on how the organisation is directed and controlled. For financial governance, this environment is established through setting out clear policies and procedures. This briefing is intended to support finance staff in shadow ICBs as they prepare the financial control environment, in terms of determining financial policies and the associated procedures.
3. Provisions and accruals: As the 2021/22 accounts are prepared, CCGs will need to consider whether there are any liabilities arising from decisions made ahead of the change in status that will meet the criteria for a provision.

### ***For information and comment***

NHSE: Enhancing board oversight: a new approach to non-executive director champion roles



This guidance sets out a new approach to ensuring board oversight of important issues by discharging the activities and responsibilities previously held by some non-executive director champion roles, through committee structures. It also describes which roles should be retained and provides further sources of information on each issue.

This NHSE paper can be found here: <https://www.england.nhs.uk/publication/enhancing-board-oversight-a-new-approach-to-non-executive-director-champion-roles/>

### ***For action***

Restraint, segregation and seclusion review: CQC Progress report

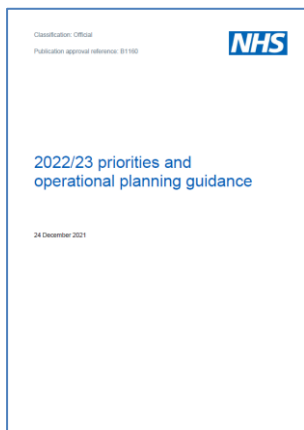
This short report comments on the progress following publication of the CQC's "Out of sight – who cares?" report and highlights the main areas where further work is still needed.

This progress report issued in December 2021 can be found here: <https://www.cqc.org.uk/publications/themed-work/restraint-segregation-seclusion-review-progress-report>

### ***For information***

## Developments in the NHS

NHS 2022/23 priorities and operational planning guidance issued



NHS E/I has issued The 2022/23 priorities and operational planning guidance, which sets out the priorities for the year ahead. This guidance reconfirms the ongoing needed to restore services, meet new care demands and reduce the care backlogs that are a direct consequence of the pandemic.

It can be found here: <https://www.england.nhs.uk/publication/2022-23-priorities-and-operational-planning-guidance/>

***For action by NHS bodies***

Nuffield Trust report: Going it alone; health and Brexit in the UK



This Nuffield Trust report, an interim output from the Health and International Relations Monitor project funded by the Health Foundation, considers the impact of leaving the EU and changing international relations for health.

It considers changes in health across six key areas: medicines and devices, international trade agreements, devolution, procurement, workforce and Northern Ireland.

It can be found here: <https://www.nuffieldtrust.org.uk/research/going-it-alone-health-and-brex-it-in-the-uk>

***For information***

## Developments in the NHS

Government response to the independent inquiry report into the issues raised by former surgeon Ian Paterson

The report of the independent inquiry into the issues raised by Paterson was published on 4 February 2020. This publication sets out the government's response to the 15 recommendations made in the inquiry report. The response:

- outlines actions that are being carried out and the steps taken to address the issues raised by the inquiry in February 2020
- sets out an implementation plan, which details the necessary actions that the government and healthcare organisations need to make to enhance patient safety in the future

It can be found here: <https://www.gov.uk/government/publications/government-response-to-the-independent-inquiry-report-into-the-issues-raised-by-former-surgeon-ian-paterson>

### **For information**

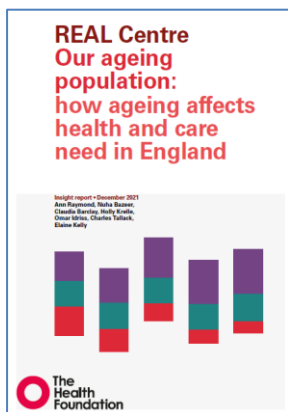
People at the Heart of Care: adult social care reform white paper (NHS Providers' briefing)

On 1 December 2021 the government published the social care reform white paper, People at the Heart of Care, which sets out a 10-year vision for transforming and supporting care in England. This vision was developed following engagement with the social care sector, and the government will continue to engage with partners to support its delivery. In this briefing, NHS Providers' summarise the ambitions set out in the white paper, and the accompanying policies to be implemented over the next three years.

It can be found here: <https://nhsproviders.org/resource-library/briefings/next-day-briefing-people-at-the-heart-of-care-adult-social-care-reform-white-paper>

### **For information**

How ageing affects health and care need in England (Health Foundation report)



England's population is ageing. In the next 25 years, the number of people older than 85 will double to 2.6 million. In many ways this is something to celebrate. However, as people age the risk of developing illnesses and becoming frail increases, leading to greater need for health and social care. But does our ageing population mean an inevitable rise in demand and the costs of care? As this report explores, the reality is more subtle and complex.

The report examines this dynamic by analysing changes in two measures of need:

- an estimate of social care need, drawn from the English Longitudinal Study of Ageing (ELSA)
- prevalence of long-term conditions, as a proxy for health and health service demand.

It explores how health and care needs change with age, how the relationship between need and age has changed over time and how long-term conditions and social care needs interact.

The report can be found here: <https://www.health.org.uk/publications/our-ageing-population>

### **For information**

**Disclaimer: This briefing paper is intended to highlight recent developments and issues within the NHS that may be of interest to non-executive directors, lay members and NHS managers. It is not exhaustive and TIAN cannot be held responsible for any omission.**