



Cabinet Office

CARBON REDUCTION PLAN GUIDANCE

Notes for Completion

Where an In-Scope Organisation has determined that the measure applies to the procurement, suppliers wishing to bid for that contract are required at the selection stage to submit a Carbon Reduction Plan which details their organisational carbon footprint and confirms their commitment to achieving Net Zero by 2050.

Carbon Reduction Plans are to be completed by the bidding supplier¹ and must meet the reporting requirements set out in supporting guidance, and include the supplier's current carbon footprint and its commitment to reducing emissions to achieve Net Zero emissions by 2050.

The CRP should be specific to the bidding entity, or, provided certain criteria are met, may cover the bidding entity and its parent organisation. In order to ensure the CRP remains relevant, a Carbon Reduction Plan covering the bidding entity and its parent organisation is only permissible where the detailed requirements of the CRP are met in full, as set out in the Technical Standard² and Guidance³, and all of the following criteria are met:

- The bidding entity is wholly owned by the parent;
- The commitment to achieving net zero by 2050 for UK operations is set out in the CRP for the parent and is supported and adopted by the bidding entity, demonstrated by the inclusion in the CRP of a statement that this will apply to the bidding entity;
- The environmental measures set out are stated to be able to be applied by the bidding entity when performing the relevant contract; and
- The CRP is published on the bidding entity's website.

Bidding entities must take steps to ensure they have their own CRP as soon as reasonably practicable and should note that the ability to rely on a parent organisation's Carbon Reduction Plan may only be a temporary measure under this selection criterion.

The Carbon Reduction Plan should be updated regularly (at least annually) and published and clearly signposted on the supplier's UK website. It should be approved by a director (or equivalent senior leadership) within the supplier's organisation to demonstrate a clear commitment to emissions reduction at the highest level. Suppliers may wish to adopt the key objectives of the Carbon Reduction Plan within their strategic plans.

A template for the Carbon Reduction Plan is set out below. Please complete and publish your Carbon Reduction Plan in accordance with the reporting standard published alongside this PPN.

¹Bidding supplier or 'bidding entity' means the organisation with whom the contracting authority will enter into a contract if it is successful.

²Technical Standard can be found at:

https://assets.publishing.service.gov.uk/government/uploads/system/uploads/attachment_data/file/991625/PPN_0621_Technical_standard_for_the_Completion_of_Carbon_Reduction_Plans__2_.pdf

³Guidance can be found at:

https://assets.publishing.service.gov.uk/government/uploads/system/uploads/attachment_data/file/991623/Guidance_on_adopting_and_applying_PPN_06_21__Selection_Criteria__3_.pdf

Carbon Reduction Plan

Supplier name: 360 Assurance (University Hospitals of Derby and Burton NHS Foundation Trust)

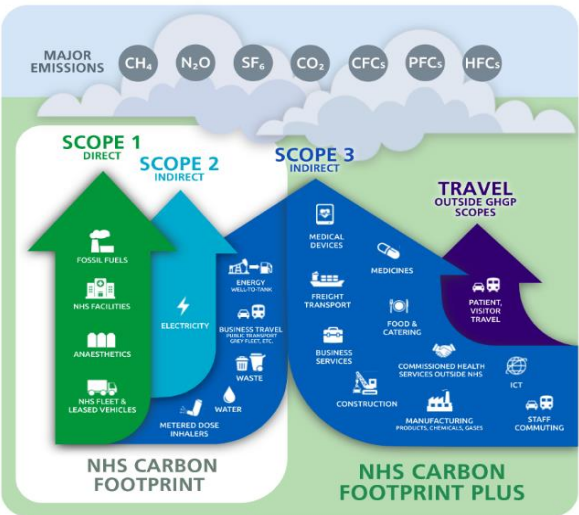
Publication date: 16/04/2025

Commitment to achieving Net Zero

360 Assurance (as part of University Hospitals of Derby and Burton NHS Foundation Trust) is committed to achieving Net Zero emissions by 2040.

In the NHS, net zero targets are as follows:

- For the emissions we control directly (the 'NHS Carbon Footprint'), we will reach net zero by 2040, with an ambition to reach an 80% reduction by 2028 to 2032.
- For the emissions we can influence (our 'NHS Carbon Footprint Plus'), we will reach net zero by 2045, with an ambition to reach an 80% reduction by 2036 to 2039.



Baseline Emissions Footprint

Baseline emissions are a record of the greenhouse gases that have been produced in the past and were produced prior to the introduction of any strategies to reduce emissions. Baseline emissions are the reference point against which emissions reduction can be measured.

Baseline Year: 2007/08 (total) and 2018/19 (broken down into scope)
Additional Details relating to the Baseline Emissions calculations.
For our overall emissions (ie not broken down into scopes) our baseline is 2007/08 (163,618 tCO ₂ e). However, as UHDB comprises two former Trusts that merged, data broken down into scopes is not available until 2018/19 (hence 2018/19 is the baseline for analysis of emissions based on scope). Prior to the formation of UHDB each legacy Trust calculated annual carbon

footprints (hence we have overall carbon footprint data going back to 2007/08); but methodology was slightly different - hence scope data is not available until 2018/19.

To track progress against a background of increasing patient activity, we also calculate 'per patient' emissions.

2007/08 baseline year emissions:

EMISSIONS	TOTAL (tCO ₂ e)
Total Emissions	163,618 tCO ₂ e
Per patient emissions	304.79 kgCO ₂ e

2018/19 baseline year emissions:

EMISSIONS	TOTAL (tCO ₂ e)
Scope 1	14,262 tCO ₂ e
Scope 2	12,350 tCO ₂ e
Scope 3 & 3+	164,363 tCO ₂ e
Total Emissions	NHS Carbon Footprint: 27,719 tCO ₂ e (Scope 1, 2 & 3) NHS Carbon Footprint Plus: 163,255 tCO ₂ e (Scope 3+) Total emissions: 190,974 tCO ₂ e
Per patient emissions	220.18 kgCO ₂ e

NHS CARBON FOOTPRINT		18/19
Scope 1	Natural Gas	12,044
	Oil	712
	Medical Gases	1,450
	Fleet	56
Scope 2	Electricity	12,350
Scope 3	Business Travel	383
	Waste	266
	Water	459
Total		27,719

NHS CARBON FOOTPRINT PLUS		18/19
Scope 3+	Procurement	154,452
	Patient Catering	7,109
	Restaurant Catering	1,665
	Employee Commuting	29
Total		163,255

Current Emissions Reporting

Reporting Year: 2024	
EMISSIONS	TOTAL (tCO ₂ e)
Scope 1	16,999 tCO ₂ e
Scope 2	10,020 tCO ₂ e
Scope 3 & 3+	199,558 tCO ₂ e
Total Emissions	NHS Carbon Footprint: 28,016 tCO ₂ e (Scope 1, 2 & 3) NHS Carbon Footprint Plus: 198,561 tCO ₂ e (Scope 3+) Total emissions: 226,577 tCO ₂ e
Per patient emissions	266 kgCO ₂ e

NHS CARBON FOOTPRINT		2024
Scope 1	Natural Gas	14,014
	Oil	8
	Medical Gases	2,929
	Fleet	48
Scope 2	Electricity	10,020
Scope 3	Business Travel	232
	Waste	623
	Water	142
Total		28,016

NHS CARBON FOOTPRINT PLUS		2024
Scope 3+	Procurement	191,200
	Patient Catering	5,804
	Restaurant Catering	1,519
	Employee Commuting	38
Total		198,561

We don't currently calculate specific upstream and downstream transportation emissions as a separate emissions category; nor do NHS England who calculate the national NHS Carbon Footprint.

It is our understanding that 'upstream transportation and distribution' emissions relate to indirect GHG emissions associated with purchased or acquired goods and services. All our procurement and supply chain emissions, included in our 'procurement' category, are calculated using a 'top-down' spend model using EClass III codes and associated kgCO₂e per £ spent conversion factors.

Downstream emissions - indirect GHG emissions related to transportation and distribution of products sold by the reporting company - are not calculated as part of our carbon footprint as we are a healthcare provider rather than the seller of goods.

Emissions reduction targets

In line with the [Delivering a Net Zero National Health Service report](#), we aim to reach net zero for our 'NHS Carbon Footprint' by 2040 and for our 'NHS Carbon Footprint Plus' by 2045.

In order to continue our progress to achieving Net Zero, we have adopted the following carbon reduction targets.

'NHS Carbon Footprint' reduction targets:

The 'NHS Carbon Footprint' comprises emissions from sources that we control directly, including scope one and two emissions and some scope three emissions such as business travel, waste and water.

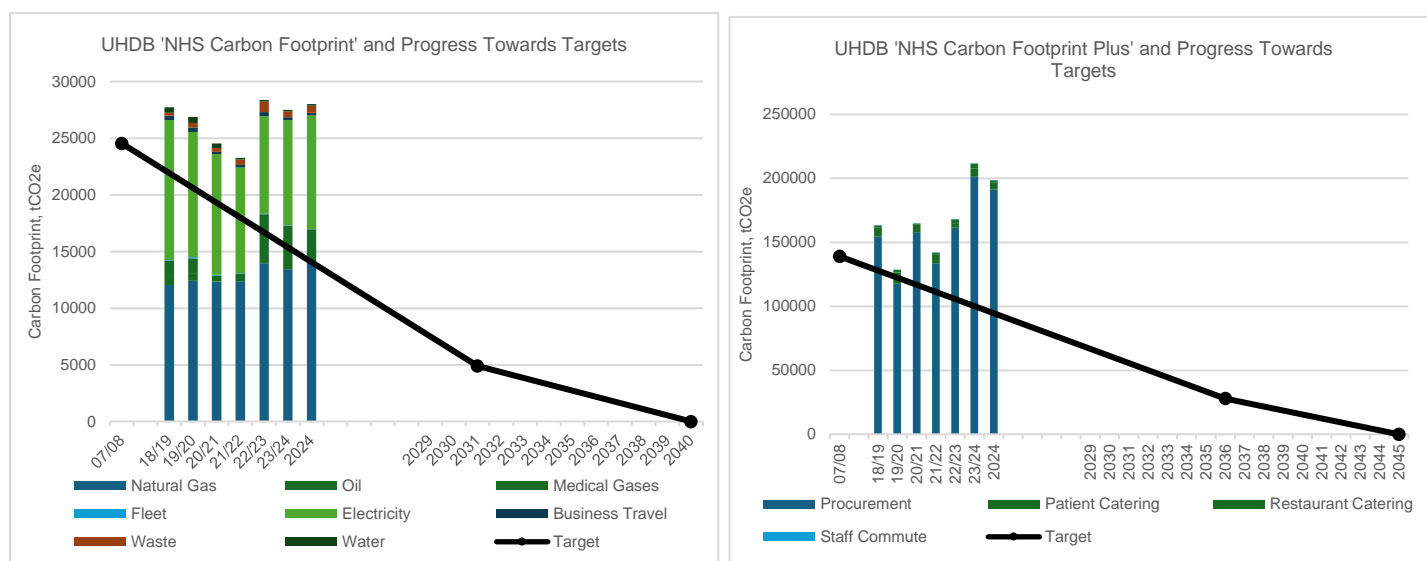
Target Detail	Target annual emissions	Deadline
80% reduction	5,544 tCO ₂ e	2028-2032
Net zero	0	2040

'NHS Carbon Footprint Plus' reduction targets:

The 'NHS Carbon Footprint Plus' comprises emissions from sources that we influence, including staff commuting, medicines, food/catering and medical devices.

Target Detail	Target annual emissions	Deadline
80% reduction	32,651 tCO ₂ e	2036-2039
Net zero	0	2045

Progress against these targets can be seen in the graphs below:



We project that NHS carbon footprint emissions will decrease over the next five years to 27,577 tCO₂e by 2029. This is a reduction of 2% based on current projects underway, although we aim to increase this with the additional projects planned.

Carbon Reduction Projects

Completed Carbon Reduction Initiatives

Energy efficiency projects have been ongoing for many years across our UHDB sites, with transition to LED, installation of Building Management Systems (BMS) and utilities monitoring already in place. The following quantified environmental management measures and projects have been completed since the 2017/18 baseline, and will be in effect when performing the contract:

- Fleet decarbonisation, including an increase in the proportion of our fleet comprising electric and low emission vehicles. A 44% reduction in fleet mileage was achieved in 2024 compared to the 2018/19 baseline.
- Installation of small-scale solar at our Queen's Hospital, Florence Nightingale and Drivability sites; producing 118,010 kWh of electricity annually.
- Measures implemented to reduce nitrous oxide waste led to an estimated 15% reduction in emissions related to nitrous oxide in 2024.
- Desflurane, an anaesthetic gas with a global warming potential (GWP100) of 2540, has been fully decommissioned, a considerable achievement that required significant cultural shift given UHDBs historic high use of this gas - with desflurane accounting for 40% of total inhaled anaesthesia used in 2018.
- We have achieved a 27% reduction in paper usage compared to our baseline of 2018/19. Reducing our consumption from 32.5 million sheets of paper to 25.7 million sheets. An increase in the proportion of paper made from recycled sources has also been achieved - with 97% of paper procured made from recycled sources in 2024/25 (compared to 91% in 2018/19). The combination of reduced paper consumption and

increase in proportion made from recycled sources saved approximately 231 tonnes of CO₂e in 2045/25 compared to 2018/19.

- In line with our 'Digital First' agenda, colleagues transferred paper Essential Safety Guides into digital format, significantly improving their availability- enabling staff to access the most up-to-date clinical information and saving an estimated 1.9 tonnes of Co₂e associated with the manufacture of paper each year.

Project	Annual Saving		
	CO ₂ e (tonnes)	NHS Carbon Footprint	Total UHDB Carbon Footprint
Fleet decarbonisation	8	0.03%	0.004%
On-site solar	24.43	0.09%	0.01%
15% reduction in Nitrous Oxide waste	950	3%	0.5%
Decommissioning of Desflurane	1,406	5%	0.74%
Paper reduction	231	-	0.10%
Essential Safety eGuides	1.9	-	0.001%
Total	2,388	8.53%	1.36%

In addition to the above, we have implemented the [NHS Net Zero Supplier Roadmap](#), requiring all contracts to include 10% minimum net zero / social value weighting and requiring suppliers to provide Carbon Reduction Plans (aligning with PPN 06/20 and 06/21). We also have a Green Clinical Forum and Environmental Champions programme to empower our staff to drive change in their area of influence and have previously offered free Carbon Literacy training to our teams.

Significant work has also been undertaken outside the direct scope of Carbon Reduction, including green space projects including Badgers Wood Community Woodland Project at Queen's Hospital and the Community Orchard Project at Sir Robert Peel Community Hospital.

Planned Carbon Reduction Initiatives

Additional projects are planned for 2025/26, including installation of solar across our estate and further installation of LED lighting at our Sir Robert Peel Community Hospital site. At our Drivability centre the solar installation currently underway will increase the proportion of on-site solar to provide 99% of the building's electricity demand (compared to 28% currently). The carbon emission reduction achieved by planned solar and LED schemes is projected to equate to 254.01 tCO₂e, a 0.112% reduction against our current carbon footprint and the measures will be in effect when performing the contract.

Site	Project	Annual Saving			
		National Grid Electricity (kWh)	CO ₂ e (tonnes)	NHS Carbon Footprint	Total UHDB Carbon Footprint
Queen's Hospital	Solar	417,000	86.34	0.308%	0.038%
Florence Nightingale Community Hospital	Solar	333,750	69.10	0.247%	0.030%
Sir Robert Peel Community Hospital	LED Lighting	251,872	52.15	0.186%	0.023%

Site	Project	Annual Saving			
		National Grid Electricity (kWh)	CO2e (tonnes)	NHS Carbon Footprint	Total UHDB Carbon Footprint
Sir Robert Peel Community Hospital	Solar	108,750	22.52	0.080%	0.010%
Samuel Johnson Community Hospital	Solar	104,250	21.58	0.077%	0.010%
Derby Driveability	Solar	11,160	2.31	0.008%	0.001%
Total		1,226,782	254.01	0.907%	0.112%

In addition to the above, we are currently evaluating the potential for geothermal wells at Queen's Hospital and planning is underway with system partners for potential Derby Heat Network connections at our Royal Derby and Florence Nightingale sites.

The sustainability team, which sit within the Estates and Facilities Directorate, are working towards implementation of ISO14001 Environmental Management during 2025/26.

Declaration and Sign Off

This Carbon Reduction Plan has been completed in accordance with PPN 06/21 and associated guidance and reporting standard for Carbon Reduction Plans.

Emissions have been reported and recorded in accordance with the published reporting standard for Carbon Reduction Plans and the GHG Reporting Protocol corporate standard⁴ and uses the appropriate Government emission conversion factors for greenhouse gas company reporting⁵.

Scope 1 and Scope 2 emissions have been reported in accordance with SECR requirements, and the required subset of Scope 3 emissions have been reported in accordance with the published reporting standard for Carbon Reduction Plans and the Corporate Value Chain (Scope 3) Standard⁶.

This Carbon Reduction Plan has been reviewed and signed off by the board of directors (or equivalent management body).

Signed on behalf of the Supplier:



Elaine Dower

Date: 23 April 2025

⁴<https://ghgprotocol.org/corporate-standard>

⁵<https://www.gov.uk/government/collections/government-conversion-factors-for-company-reporting>

⁶<https://ghgprotocol.org/standards/scope-3-standard>

